

LOT 227



LEGEND

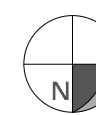
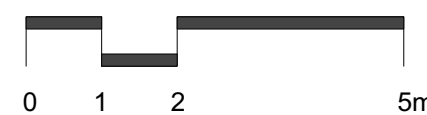
- Existing trees to be retained
- Existing trees to be removed
- Proposed tree plantings
- Proposed shrub plantings
- Proposed groundcover plantings
- Concrete path pavement
- Non slip courtyard pavement
- Stencil concrete pavement
- Proposed garden bed
- Proposed turfed area
- Porous decorative pebble surface
- Timber edge or garden edge
- Precast concrete stepping stones
- Weed management and vegetation regeneration area

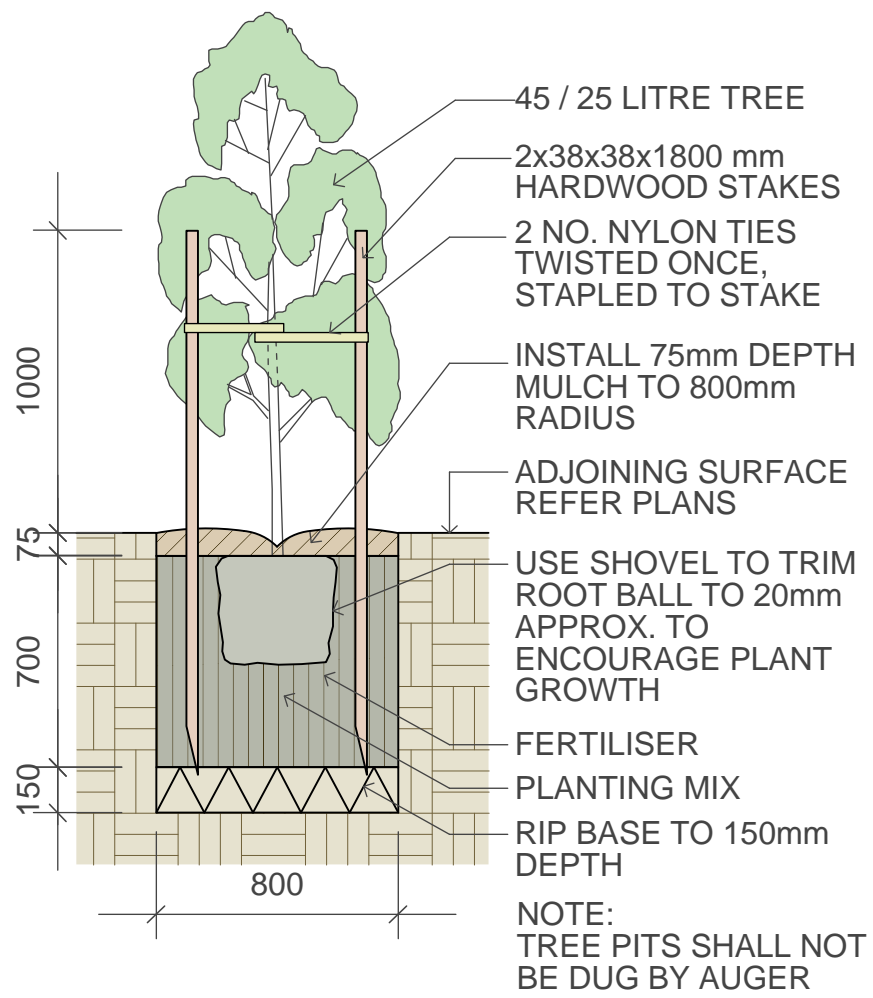
Notes:

- Refer Architects drawings for pavement, walls, fence, steps, and levels
- Refer Engineers drawings for hydraulic information
- Refer L.03 for Plant Schedule, landscape details and specification

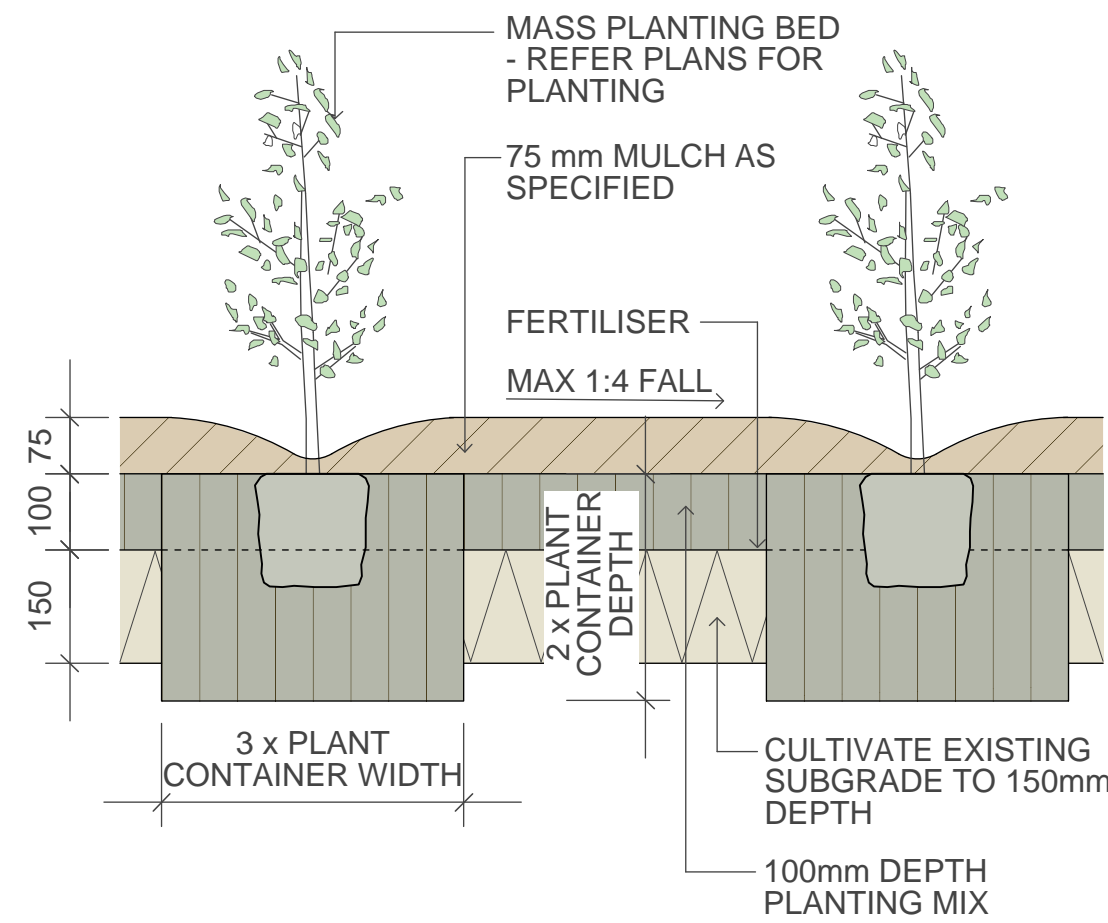


GENERAL NOTES: 1. Do not scale of drawings. Follow written dimensions. If in doubt obtain written advice from the Superintendent. 2. Verify all dimensions on site. 3. Refer to legend for all symbol and code keys. 4. Read in conjunction with the specifications 5. Read in conjunction with all associated drawings				DESIGNED: GD	PREPARED FOR: AN KHONG MEDITATION CENTRE	LANDSCAPE ARCHITECTS: GREENLAND DESIGN Pty Ltd ABN 73 139 152 855 Landscape Architect C. Ly AILA Mob.: 0403 164 198	PROJECT: PROPOSED MEDITATION CENTRE "AN KHONG MEDIATION CENTRE"	DRAWING TITLE: Landscape Plan - Area 2	DATE: DECEMBER 2015	
A	FOR APPROVAL	CL	16.12.15	DRAWN: CL					SCALE: 1:250 FULL SIZE: A1	ISSUE: A
ISSUE	AMENDMENT	DRAWN	DATE				PROJECT ADDRESS: NO. 353-371 DELAWARE ROAD HORSLEY PARK		DRAWING NO: 1234.L.02	

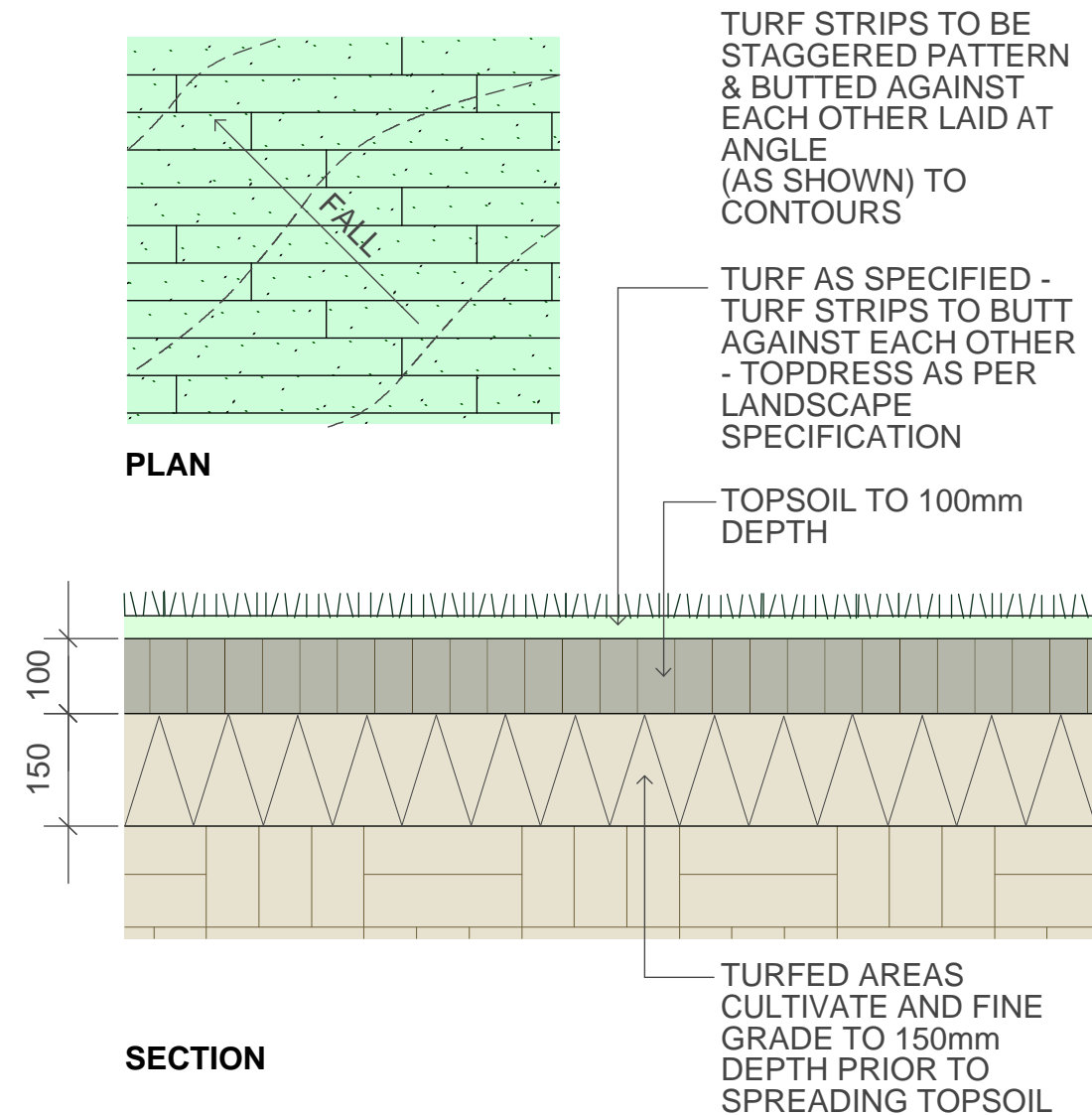




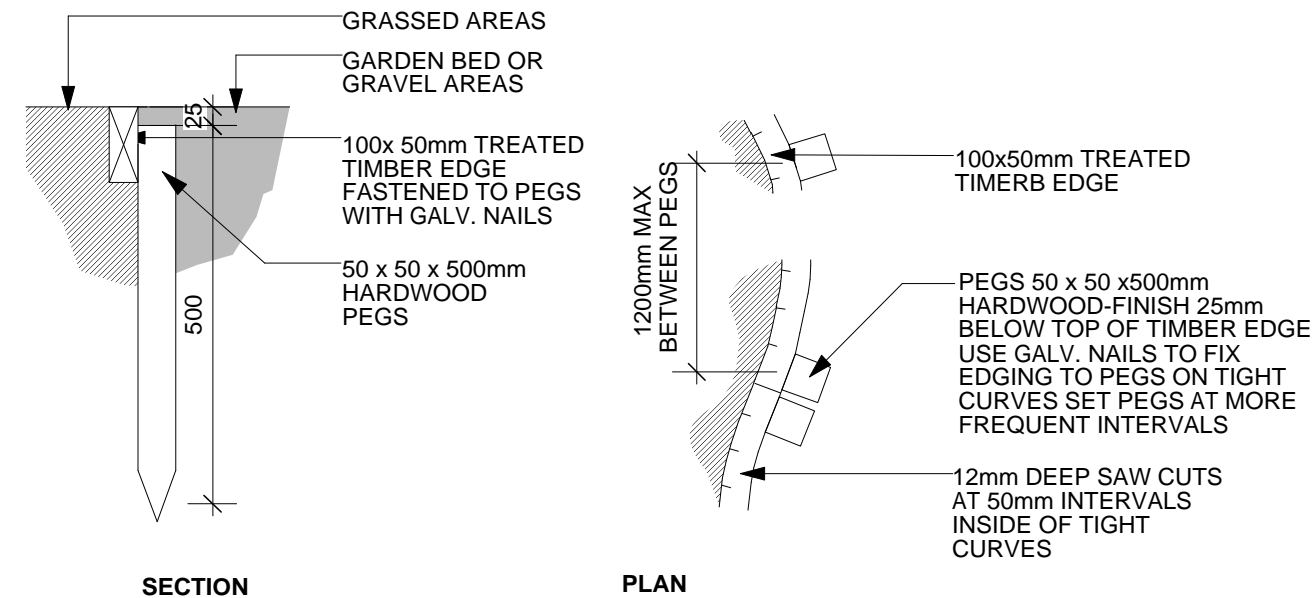
1 45 / 25 Litre Tree Planting
scale 1:25



2 Planting Bed Detail
scale 1:10



3 Turfing
scale as shown



4 Timber Edge
scale 1:10

Plant Schedule							
ID	Qty	Common Name	Botanical Name	Size	Mature Height	Mature Spread	Native (N)
Trees							
TAD	58	Parramatta Wattle	Acacia decurrens	25Litre	10 - 15m	3.5 - 6m	N
TCA	13	Tuckeroo	Cupaniopsis anacardioides	45Litre	6 - 9m	3.5 - 6m	N
TEA	7	Cabbage Gum	Eucalyptus amplifolia	25Litre	25 - 30m	3.5 - 6m	N
TEC	20	Narrow leaved Ironbark	Eucalyptus crebra	25Litre	over 30m	6 - 10m	N
TEM	30	Grey Box	Eucalyptus moluccana	25Litre	15 - 20m	6 - 10m	N
TEX	24	Native Cherry	Exocarpus cupressiformis	25Litre	3 - 5m	3.5 - 6m	N
THF	11	Native Frangipani	Hymenosporum flavum	45Litre	8 - 12m	3.0 - 4m	N
TLI	18	Crepe Myrtle	Lagerstroemia indica 'Natchez'	45Litre	6 - 8m	3.5 - 6m	N
TMD	28	White Feather Honeymyrtle	Melaleuca decora	45Litre	8 - 12m	5 - 8m	N
TMF	4	Flowering Crabapple	Malus x floribunda	45Litre	4 - 6m	6 - 10m	N
TPL	15	Indian Mast Tree	Polylaithia longifolia	25Litre	5 - 10m	1.5 - 2m	N
TSB	17	Weeping Willow	Salix babylonica	25Litre	5 - 10m	3.5 - 6m	N
TUP	26	Chinese Elm	Ulmus parvifolia	45Litre	8 - 12m	10 - 15m	N
TWF	15	Weeping Lilly Pilly	Waterhousia floribunda	45Litre	6 - 8m	3.5 - 6m	N
Shrubs							
SAC	143	Green Mist	Acmena 'Allyn Magic'	200mm	1.0 - 1.5m	0.8 - 1.0m	N
SAH	262	Dwarf Lilly Pilly	Acmena 'Hedge Master'	200mm	0.8 - 1.0m	0.8 - 1.0m	N
SBM	29	Japanese Box	Buxus microphylla var japonica	200mm	0.6 - 0.8m	0.8 - 1.0m	N
SBS	630	Common Boxwood	Buxus sempervirens	200mm	3 - 5m	0.9 - 1.2m	N
SBU	179	Blackthorn	Bursaria spinosa	200mm	2 - 3m	0.3 - 0.6m	N
SCE	24	Evening Glow Mirror Plant	Coprosma 'Evening Glow'	200mm	0.9 - 1.5m	0.9 - 1.2m	N
SCS	24	Sasanqua Camellia	Camellia sasanqua	200mm	3 - 5m	3.5 - 6m	N
SDU	186	Gorse Bitter Pea	Daviesia ulicifolia	200mm	1.5 - 2m	2.0 - 3.5m	N
SDV	351	Hopseed Bush	Dodonaea viscosa	200mm	2 - 4m	2.0 - 3.5m	N
SGA	90	Gardenia	Gardenia augusta	200mm	0.9 - 1.5m	0.9 - 1.2m	N
SHB	177	Veronica	Hebe 'Blue Gem'	200mm	0.9 - 1.5m	0.6 - 0.9m	N
SIA	261	Australian Indigo	Indigofera australis	200mm	1.5 - 3m	2.0 - 3.5m	N
SMF	8	Banana Shrub	Michelia figo	200mm	1.5 - 3m	2.0 - 3.5m	N
SMP	30	Orange Jessamine	Murraya paniculata	200mm	1.5 - 3m	3.5 - 6m	N
SPT	158	New Zealand Flax	Phormium tenax 'Flamin'	200mm	0.6-0.9m	0.8 - 1.0m	N
SPX	76	Philodendron	Philodendron xanadu	200mm	0.6 - 0.8m	0.7 - 1.0m	N
SSR	117	Bird Of Paradise	Strelitzia reginae var juncea	200mm	0.9 - 1.5m	0.9 - 1.2m	N
SSY	206	Cascade Lilly Pilly	Syzygium 'Cascade'	200mm	2 - 3m	1.2 - 2.0m	N
SWB	246	Blue Gem	Westringia 'Blue Gem'	200mm	0.8 - 1.0m	0.9 - 1.2m	N
SYE	6	Spineless Yucca	Yucca elephantipes	200mm	2.0 - 3.0m	0.8 - 1.2m	N
Ground Covers							
GHV	754	False Sarsaparilla	Hardenbergia violacea	viro tube	0.75 - 0.9m	1.2 - 2.0m	N
GAO	282	Lily Of The Nile	Agapanthus orientalis 'White'	150mm	0.5 - 0.6m	0.3 - 0.6m	N
GDB	140	Flax Lily	Dianella tasmanica 'Blaze'	150mm	0.4 - 0.5m	0.4 - 0.6m	N
GLM	79	Giant Lily Turf	Liriope muscari 'Evergreen Giant'	150mm	0.0 - 0.3m	0.0 - 0.3m	N
GD	862	Blue Flax-lily	Dianella longifolia	viro tube	0.6 - 0.75m	0.6 - 0.9m	N
GLF	449	Wattle Mat Rush	Lomandra filiformis	viro tube	0.45 - 0.6m	0.6 - 0.9m	N
GTA	510	Kangaroo Grass	Themeda australis	viro tube	0.9 - 1.5m	0.3 - 0.6m	N
GLT	512	Spiny-headed mat rush	Lomandra longifolia 'Tanika'	150mm	0.45 - 0.6m	0.6 - 0.9m	N
GM	146	Carpet Spreading Myoporum	Myoporum parvifolium 'Yareena'	150mm	0.45 - 0.6m	0.9 - 1.2m	N
GWM	183	Mundi	Westringia fruticosa 'Mundi'	150mm	0.45 - 0.6m	0.9 - 1.2m	N
GTA	205	Asian Jasmine	Trachelospermum asiaticum	150mm	n/a	3 - 5m	N
GTJ	764	Star Jasmine	Trachelospermum jasminoides	150mm	0.3 - 0.6m	1 - 4m	N
GCI	345	Knob Sedge	Carex inversa	viro tube	0.9 - 1.5m	0.3 - 0.6m	N
GJU	497	Common Rush	Juncus usitatus	viro tube	0.9 - 1.5m	0.6 - 0.9m	N

SPECIFICATION NOTES PLANTING MATERIALS

Planting Mix:
Planting mix for tree pit backfill shall be "Organic Garden Mix" consisting of
50% Black Soil
20% Coarse Sand
30% Organic Material
as available from Australian Native Landscapes, Phone: (02) 9450 1444, or approved equivalent. Samples shall be provided to the Superintendent prior to ordering or delivery to site. Any material delivered to site, that is rejected by the Superintendent, shall be removed by the contractor at his own expense. Minimum depths of mix to all planting bed areas is as specified on details.

Mulch:
Mulch to garden bed:
Mulch shall mean hardwood mulch (25mm grade), free from material derived from Privet, Willow, Poplar, Coral trees, or other noxious weeds. Any mulch exceeding the 25mm grade shall be rejected / removed from the site. Graded hardwood mulch to be supplied by Australian Native Landscapes Pty Ltd Phone (02) 9450 1444, or approved equivalent.

Spread mulch so that after settling, it is:
• smooth and evenly graded between design surface levels;
• flush with adjacent finished levels;
• of the required depths (75mm); and
• sloped towards the base of plant stems in plantation beds, but not in contact with the stem (not closer than 50mm in the case of gravel mulches).

Place after the preparation of the planting bed, planting and all other work.

Plant Material:
All plant material must be true to the species. No substitutes will be allowed. All plants shall be free of fungus and insect damage. All plants shall be healthy, well shaped, not soft or force grown and not root bound.

Turfed areas:
All new turf areas are to be selected weed free Soft Leaf Buffalo. Turf shall be laid neatly butted with staggered joins, flush with adjacent surfaces and have even running falls to all drainage points.

All new turf areas shall have a minimum 150mm depth of weed free top soil, placed and levelled prior to turfing.

PREPARATION AND HARDWORKS Excavating for Spot Planting

To planting areas, excavate a hole for each plant large enough to provide not less than twice the depth and twice the diameter than the root ball of species to be planted.

Staking
Use durable hardwood, straight, free from knots or twists, pointed at one end. Drive stakes into the ground a minimum one third of their length, avoiding damage to the root system.
• 45 Litre trees in 2 x 38x38x1800mm Hardwood Stake with double Nylon tie
TIES: Provide a 50mm wide Nylon webbing tie per stake, fixed securely to the stakes, one tie at half the height of the main stem and the other as necessary to stabilise the plant.

Decorative Pebble
MATERIAL: Decorative pebble shall be Western White pebble, gravel to be of uniform size or graded material in the size 30 - 40mm grade to nominal 75mm thickness as available from Australian Native Landscapes. Ph: (02) 9450 1444.

Timber Edge
MATERIAL: Timber edging shall consist of:
Edging: 100 x 50mm hardwood
Pegs: 50 x 50 x 400mm hardwood.
Fastenings: to be 75x3.75mm diam. galvanised nails

INSTALLATION: Setout alignment of timber edges on site for approval of Superintendent. Excavate to approved alignment and place edge band within trench to confirm peg locations. Install pegs and affix timber edge in accordance with details. All timber edging to finish flush with adjoining turf.

MAINTENANCE / PLANT ESTABLISHMENT

Maintenance shall apply to all hard and soft landscape materials installed prior to the "handover" and acceptance by Principles Representative and the Site Superintendent. The maintenance period shall convenience at the granting of practical completion and shall extend for 26 weeks.

Maintenance shall consist of the following works:
- Follow a daily watering programme to be approved by Superintendent. Water all plants individually, twice per week or when necessary to ensure constant plant growth. Water all turf and native grassed areas, twice per week.
- Apply appropriate weed control sprays and hand weed as required to maintain planting areas, native grassing bed areas, turf areas, paved areas, and tree pits in turf free of weed or rogue grass growth.
- Regularly tidy and top up mulch and trim edges to prevent spill over onto paved / grassed areas.
- Spray to control pests and diseases.
- Replace plants, which fail with plants of a similar size and quality as originally specified to approval of Superintendent. Costs of replacement shall be the responsibility of the Contractor. Replacement planting will be undertaken within 2 weeks of identification of dead material or instruction be the Superintendent.
- Report any incidence of plants stolen or destroyed by vandalism.
- Adjust stakes and ties to plants as necessary. Ensure that strangulation of plants does not occur.
- Prune and shape plants as directed or where necessary.
- Make good any defects or faults arising out of defective workmanship or materials.
- Fertilise lawn areas to maintain healthy growth.
- Make good any erosion or soil subsidence, which may occur including soft areas in pathways.
- Mow lawn to maintain neat healthy growth.
- A final inspection shall be made by the Superintendent before handover. Any items requiring rectification shall be repaired before the works are finally approved, and retention moneys released.

NOTE:
- All finished levels are to be verified by Contractor on site.
- All landscape works be in strict accordance with Council's landscape code and guidelines
- This plan to be used in conjunction with all other submitted architectural, hydraulics and engineering drawing where applicable.

GENERAL NOTES: 1. Do not scale of drawings. Follow written dimensions. If in doubt obtain written advice from the Superintendent. 2. Verify all dimensions on site. 3. Refer to legend for all symbol and code keys. 4. Read in conjunction with the specifications 5. Read in conjunction with all associated drawings				DESIGNED: GD DRAWN: CL		PREPARED FOR: AN KHONG MEDITATION CENTRE		LANDSCAPE ARCHITECTS: GREENLAND DESIGN Pty Ltd ABN 73 139 152 855 Landscape Architect C. Ly AILA Mob.: 0403 164 198		PROJECT: PROPOSED MEDITATION CENTRE "AN KHONG MEDIATION CENTRE"		PROJECT ADDRESS: NO. 353-371 DELAWARE ROAD HORSLEY PARK		DRAWING TITLE: Landscape Details & Specification		DATE: DECEMBER 2015	
A FOR APPROVAL				CL 16.12.15		CL										SCALE: varies FULL SIZE: A1	
ISSUE AMENDMENT				DRAWN DATE												ISSUE: A	
																DRAWING NO: 1234.L.03	